

**HONDA**  
The Power of Dreams

The Honda  
Sensing Enabled  
New City

THINKS  
AHEAD



NEW  
**CITY**



Welcome to the power  
that thinks further,  
sees further and leads ahead.

The Honda Sensing Enabled New City



It's not just a technology. It is the power  
to think ahead. To think about the future.  
To read the road a few seconds ahead.  
To see further and lead, leagues ahead.

# Honda SENSING

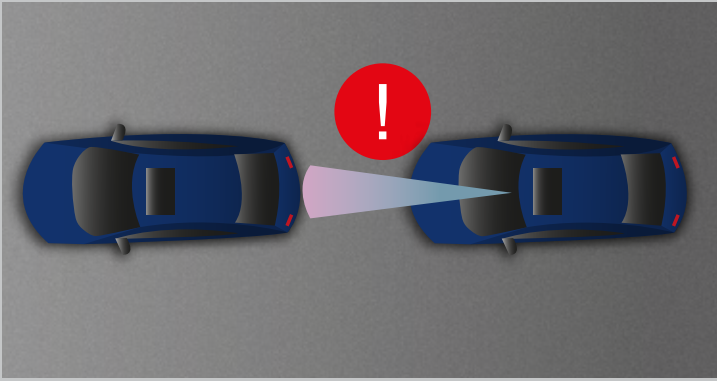


## Honda Sensing<sup>2</sup> Mitigates Collisions Using Advanced Technology

A high-performance front camera with a wide-angle, far-reaching detection system that alerts the driver and minimises risk of accidents.

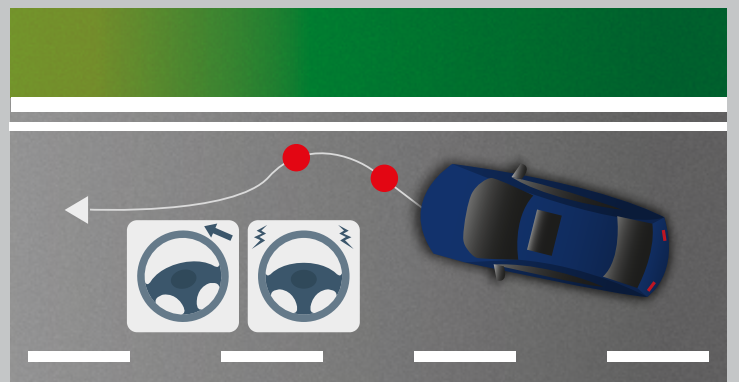
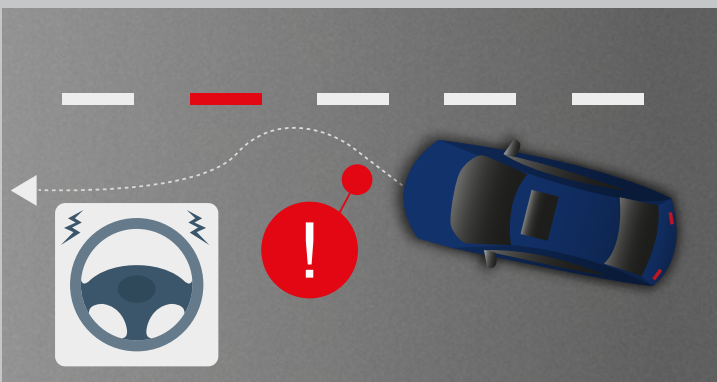


# Honda SENSING



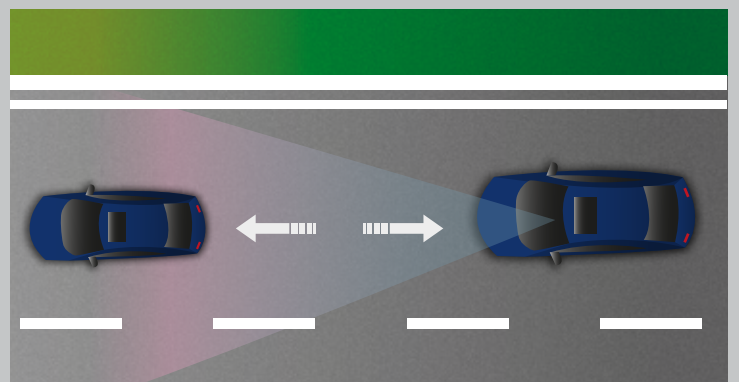
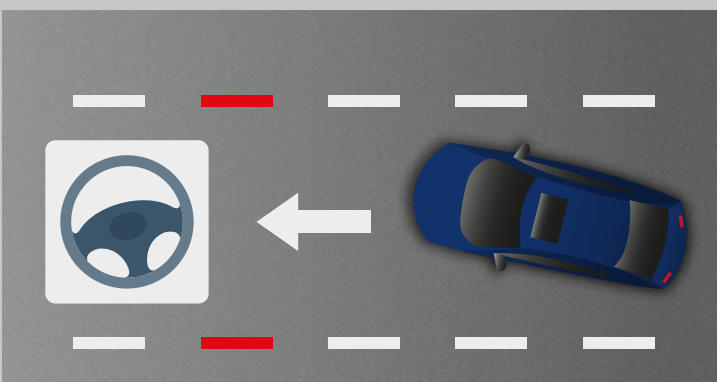
## COLLISION MITIGATION BRAKING SYSTEM

Provides advance warning where risk of collision is imminent, through audio and visual alerts to the driver. Applies brakes to slow down the speed of the car and mitigates collision.



## ROAD DEPARTURE MITIGATION SYSTEM

Provides advance warning through audio and visual alerts to the driver when the car seems to deviate from the lane. Provides steering wheel support when the car seems to deviate from the road boundaries.

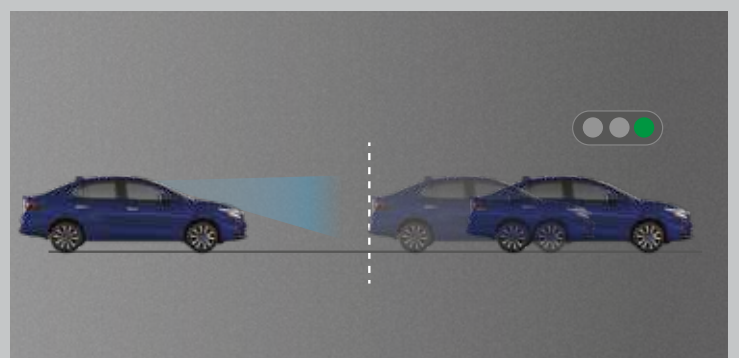
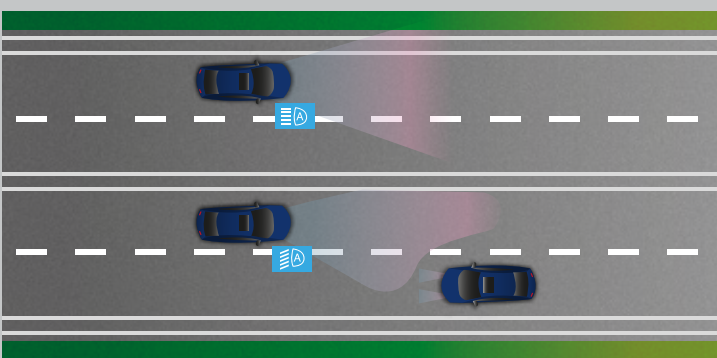


## LANE KEEP ASSIST SYSTEM

Assists the driver to steer the wheel and helps the car to drive in the middle of the lane when cruising along the highway.

## ADAPTIVE CRUISE CONTROL

Assists acceleration and braking operation when cruising on highways while maintaining safe distance from preceding car.



## AUTO HIGH-BEAM

Switches between high beam and low beam automatically at night to support good visibility for driver as well as preceding or oncoming car.

## LEAD CAR DEPARTURE NOTIFICATION SYSTEM

Inform the driver with visual and audible alerts when the vehicle ahead has started moving.

<sup>Q</sup>Honda Sensing is a driver assist system that enhances driving experience and safety while driving on roads. Drivers shall remain responsible for safe and vigilant driving. It is recommended to read the instructions in the owners' manual/guide before using the vehicle. Honda Sensing cannot substitute human acumen and vigilance while driving. Honda Cars India Limited urges drivers to follow traffic rules which are meant to keep them safe on roads.



With next gen  
Honda Connect app  
for smartphone, you  
can get up-to-date  
information about  
your vehicle - all at  
your fingertips.

**5** INDUSTRY FIRST  
YEAR SUBSCRIPTION



REMOTE AC OPERATION



LIVE CAR LOCATION



CAR DASHBOARD

India's first connected car  
with Alexa# remote capability



Works with Ok Google<sup>¥</sup>



Above features can be executed via Honda Skill through Alexa, Honda Action on Google with your Google-Assistant enabled device as per user input information in the Honda Connect App. #Amazon, Alexa and all related logos are trademarks of amazon.com, Inc. or its affiliates. Alexa device is not part of car accessory/giveaway and needs to be purchased separately. Actual device may differ from the one shown here. Please refer to amazon.com for more details. ¥Google, Google Play and the Google Play logo are the trademarks of Google LLC. \*Honda Connect Application works on smartphones: Android 7.0 and above, iOS 11.0 and above. Connected services are subject to network availability, facility/transmission limitations as per government regulation and permissions in specific regions/locations. Actual application may differ from representative images. Selective alerts work as per user settings. §Available only in CVT. Honda Connect application works on smartphones: Android 7.0 & above; iOS 11.0 & above. Actual application may differ from representative images. Selective alerts works as per user settings. For more details visit your nearest dealership or [www.hondacarindia.com](http://www.hondacarindia.com). Terms and conditions apply.



# INTELLIGENT TECHNOLOGY. INTUITIVE CONNECTIONS.

Honda Connect<sup>‡</sup> available for smartwatch<sup>‡</sup>

With smartwatch connectivity, you can control your car remotely for enhanced convenience and always stay up-to-date with important notifications



BOOT OPEN | CAR FINDER | DOOR LOCK/UNLOCK | AUTO CRASH NOTIFICATION  
AC ON/OFF | TOW AWAY ALERT | GEO-FENCE ALERT



<sup>‡</sup>Smartwatch is not part of car accessory/giveaway and needs to be purchased separately. Honda Connect application works on select smartwatch devices and is subject to network availability and government regulations. T&C apply.

T&C apply.



CHARISMA  
THAT LEADS.  
LOOKS THAT  
EXCITE.





SPORTY DIAMOND CHEQUERED FRONT GRILLE & CARBON-WRAPPED FRONT BUMPER LOWER

# SPORTY & SENSATIONAL IN EVERY CURVE.

The sporty, new front grille stands out. The new front and rear bumper design is an invitation for compliments. And the new alloy wheels heighten the sporty excitement of the driving experience.



SPORTY CARBON-WRAPPED REAR BUMPER DIFFUSER



FULL LED HEADLAMPS WITH 9 LED ARRAY (INLINE-SHELL)



Z-SHAPED 3D WRAP-AROUND LED TAIL LAMPS WITH UNIFORM EDGE LIGHT



AUTO FOLD DOOR MIRRORS WITH LED TURN SIGNAL



R 16 DUAL TONE DIAMOND CUT ALLOY WHEEL





CONTEMPORARY SEAT DESIGN WITH PREMIUM LEATHER UPHOLSTERY

# INGENIOUSLY DESIGNED FOR LUXURIOUS COMFORT

The New City artfully conceptualizes Honda's 'man maximum, machine minimum' philosophy into a thoughtfully designed interior space. Bringing comfort and convenience together to give you a sublime driving experience.



LEATHER SHIFT KNOB & REAL STITCH SOFT TOUCH KNEE PAD



REAR STITCH SOFT TOUCH DOOR LINING & ARMREST



SATIN METALLIC SURROUND FINISH ON ALL AC VENTS



AMBIENT LIGHT (FRONT DOOR INNER HANDLES & FRONT DOOR POCKETS)



AMBIENT LIGHT - FRONT FOOTWELL

# A COCKPIT THAT MAKES PERFECT SENSE



The well-laid out instrument panel makes sure all your controls are within easy reach and can be accessed at the flick of a finger. The clean refreshing design language creates a seamless driving experience in the New City. Driver posture is thoughtfully and ergonomically accounted for. The advanced touchscreen connects with Smartphones wirelessly, for hassle-free connection to your social & digital lifestyle.





17.7 CM HD FULL COLOUR TFT METER<sup>^</sup> WITH DRIVER INFORMATION INTERFACE



ADAPTIVE CRUISE CONTROL VISUAL DISPLAY, CMBS & RDM STATUS, DIGITAL SPEED DISPLAY



20.3 CM ADVANCED TOUCHSCREEN DISPLAY AUDIO



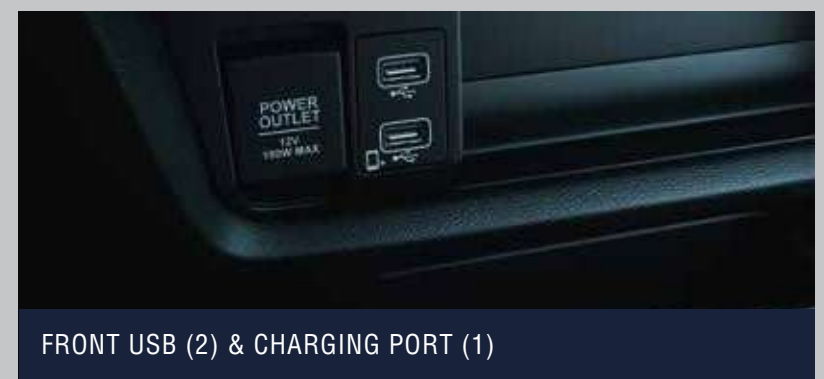
WIRELESS SMARTPHONE CONNECTIVITY (ANDROID AUTO, APPLE CARPLAY)



REMOTE CONTROL BY SMARTPHONE APPLICATION



WEBLINK\*\* (SMARTPHONE CONNECTIVITY)



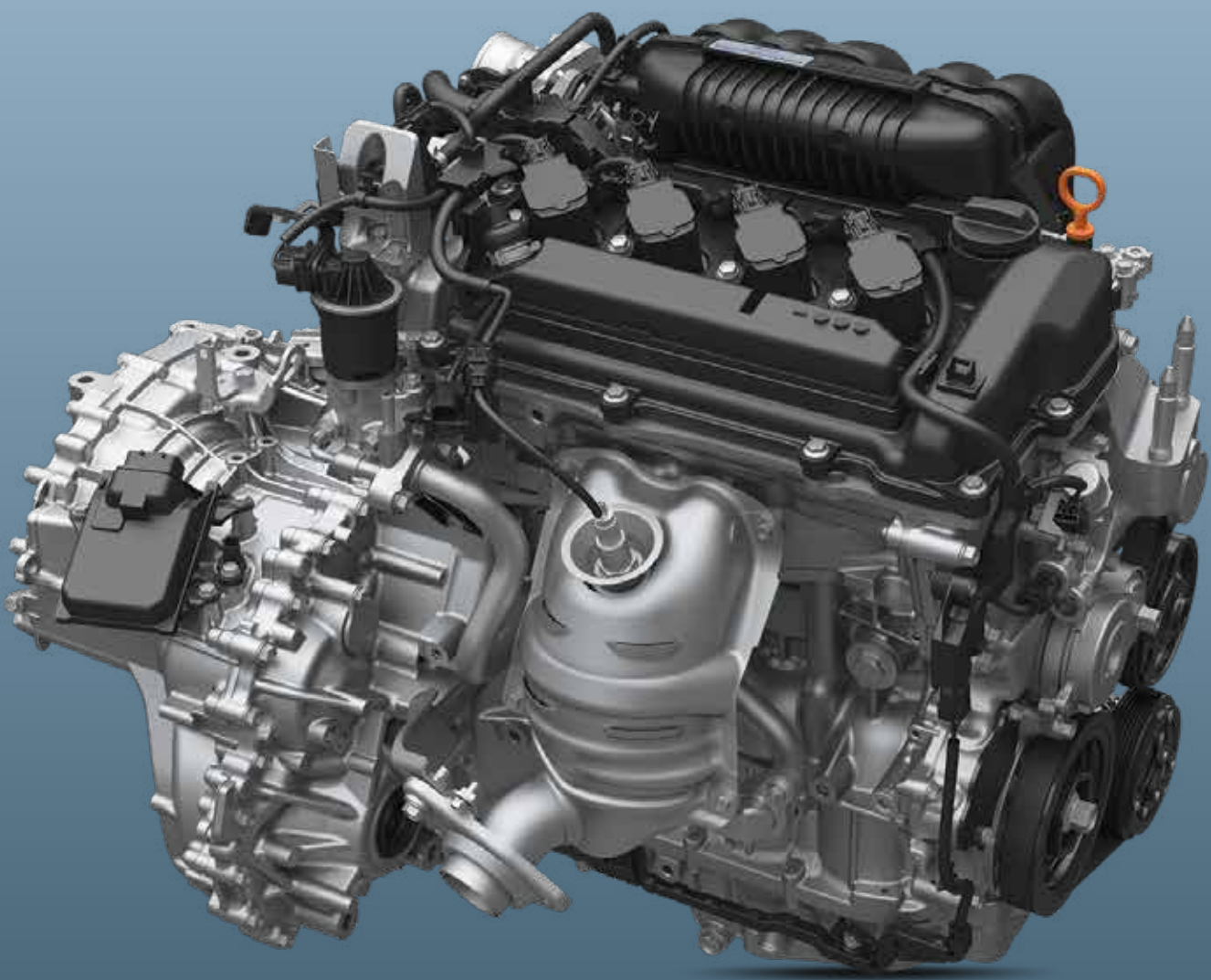
FRONT USB (2) & CHARGING PORT (1)



8 SPEAKER<sup>^</sup> PREMIUM SURROUND SOUND SYSTEM

# INTELLIGENT POWERTRAIN THAT LEADS THE TIMES

1.5 Litres i-VTEC DOHC with Variable  
Timing Control (VTC)



Based on the High Accuracy Valve Control Technology called DOHC i-VTEC + VTC, this engine improves combustion efficiency, reduces friction and lowers emissions. It is a high performance engine that delivers 89 kW (121 ps) power and 145 Nm torque, with quicker torque increase at lower engine speed.



# ADVANCED CVT: THE ULTIMATE AUTOMATIC



Developed as part of Earth Dreams Technology, CVT or Continuously Variable Transmission is Honda innovation at its best. Since power from the engine is continuously fed to the car tyres, CVT makes the ride smoother. It ensures the engine performs within a speed range that is best for fuel efficiency with 7-Speed Paddle Shifters, new Step Up-shift and Brake Down-shift control. Elevate your rush with the supremacy of Honda CVT.

- 7-Speed CVT i-VTEC (Petrol) - 18.4 km/l\*\*



## 6-SPEED MANUAL TRANSMISSION

The Manual Transmission (MT) features 6 forward speed ratios.

This achieves a better driving experience with improved fuel efficiency.

The 5 gear ratios are optimized for thrilling pick-up/acceleration, while the 6th gear overdrive ratio maximises stress-free low engine revolutions when cruising at high speeds and this is what obtains better fuel efficiency.

- 6-Speed MT i-VTEC (Petrol) - 17.8 km/l\*\*

# TOMORROW'S SAFETY STANDARDS. FOR TODAY'S DRIVING.

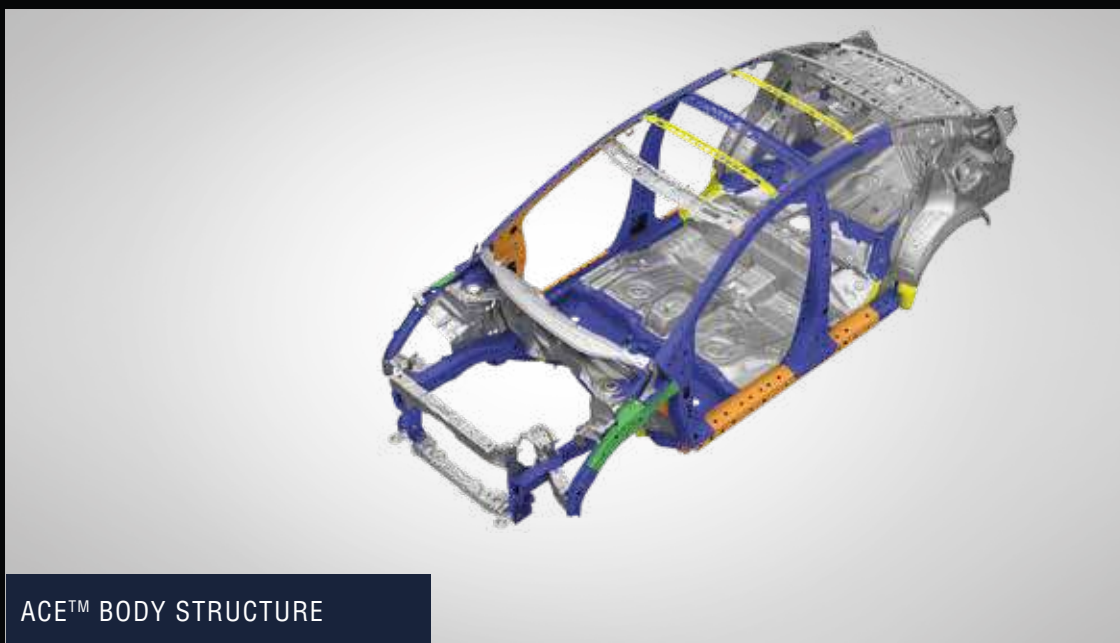


6 AIRBAGS (DUAL FRONT, i-SRS, AIRBAGS, FRONT SEATS i-SIDE AIRBAGS & SIDE & CURTAIN)

The New City utilizes ultra high tensile strength steel plates in its frame, including Super High Formability 980 MPa grade steel, to absorb impact during collisions and provide better rigidity, for more stable driving. The New City has secured a 5-star rating in internationally acclaimed safety standards for the City manufactured and tested in Thailand<sup>##</sup>. It has the world's first i-SRS Airbag System with Quick Deployment Technology, as well as the 1<sup>st</sup> in Segment<sup>^</sup> LaneWatch™ camera system which supplements side mirrors and uses a screen inside the vehicle for the driver to keep aware of the surroundings without taking their eyes off the road.

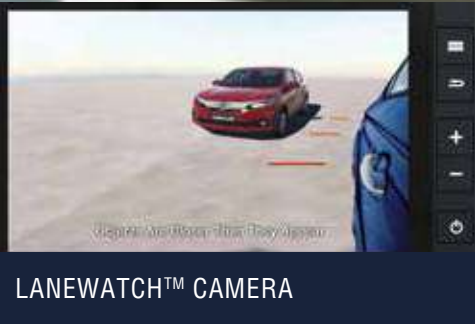


<sup>##</sup>ASEAN NCAP 5 STAR RATING HAS BEEN RECEIVED FOR THE CITY MANUFACTURED IN THAILAND.



ACE™ BODY STRUCTURE

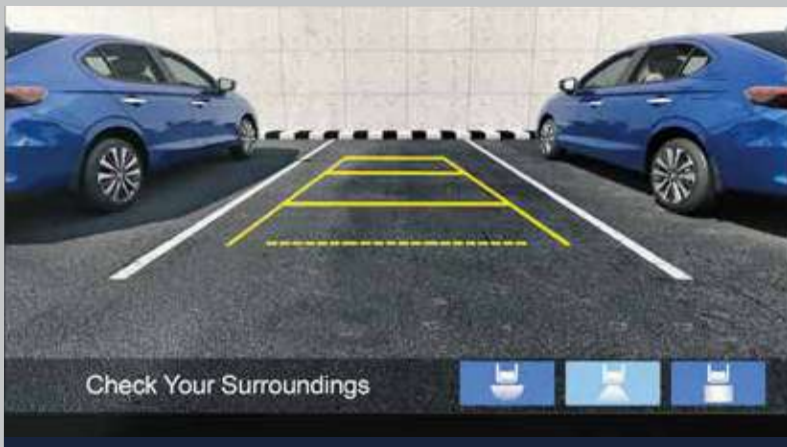




LANEWATCH™ CAMERA



HILL START ASSIST (HSA)



MULTI-ANGLE REAR CAMERA WITH GUIDELINES (NORMAL, WIDE, TOP-DOWN MODES)



EMERGENCY STOP SIGNAL (ESS)



REAR PARKING SENSORS



AUTO HEADLAMPS WITH AUTO-OFF TIMER, FOLLOW-ME-HOME & LEAD-ME-TO-CAR FUNCTIONS



RAIN SENSING WIPERS

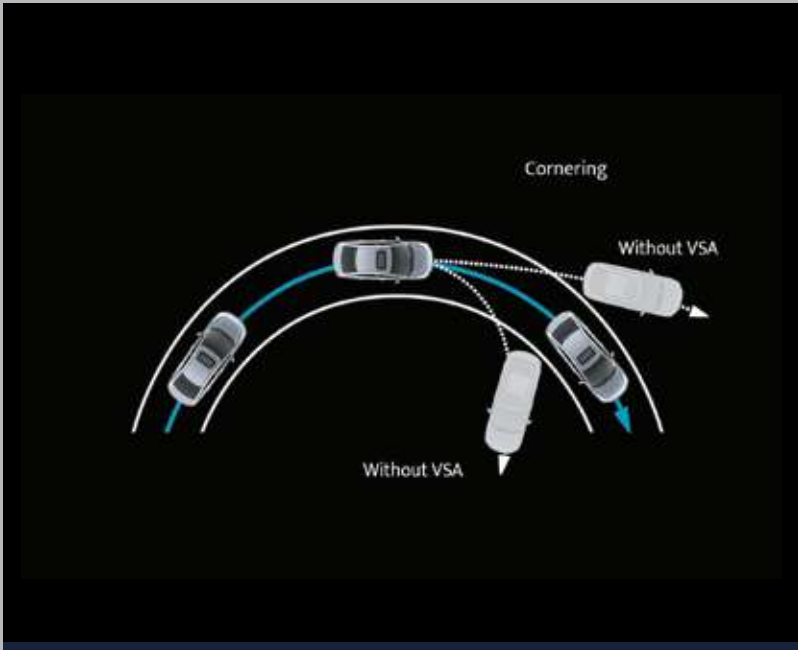


ALL POWER WINDOW AUTO UP/DOWN WITH PINCH GUARD

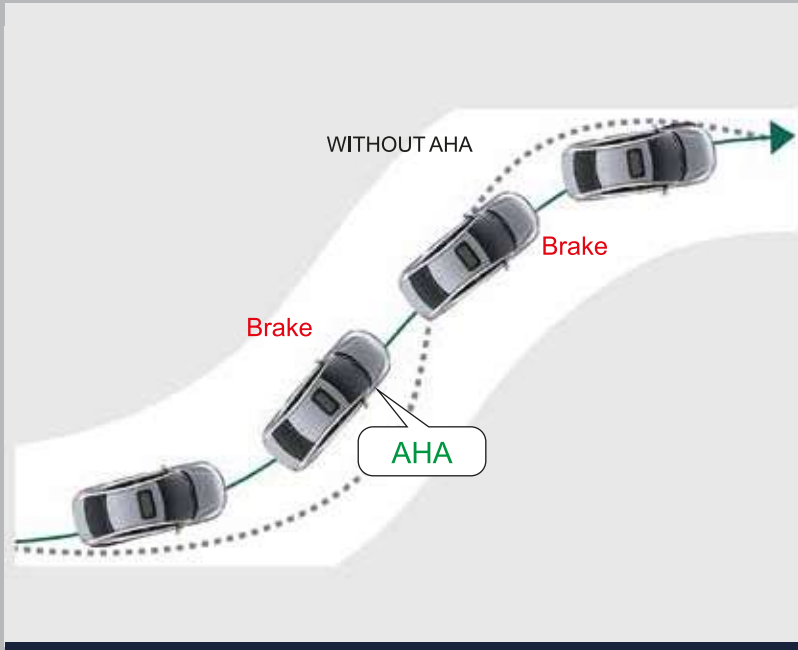


ALL SEATS HEAD RESTRAINTS WITH 3-POINT ELR SEATBELTS

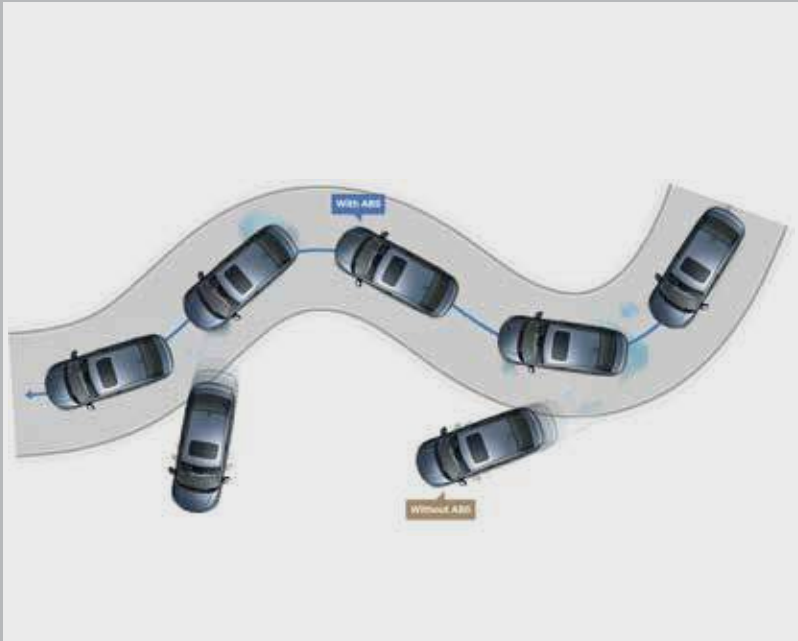




VEHICLE STABILITY ASSIST (VSA)



AGILE HANDLING ASSIST^



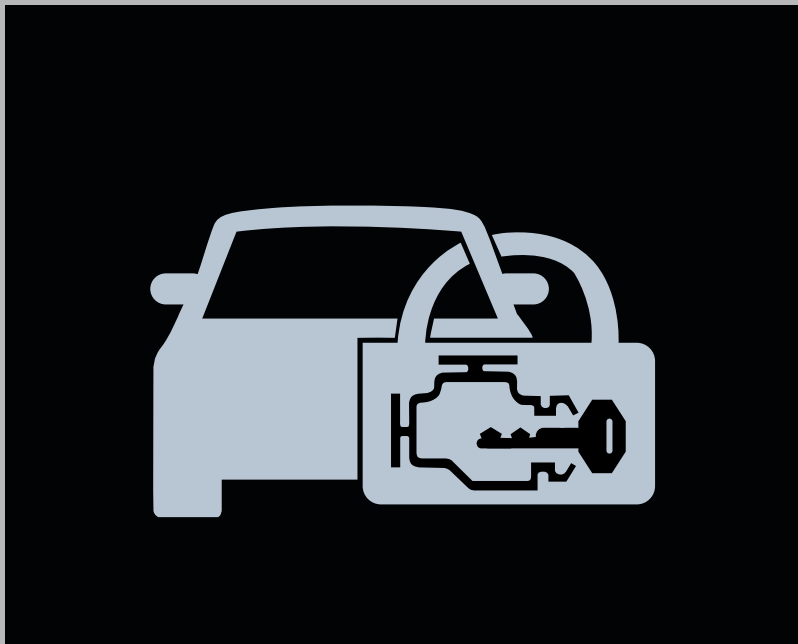
ABS WITH EBD



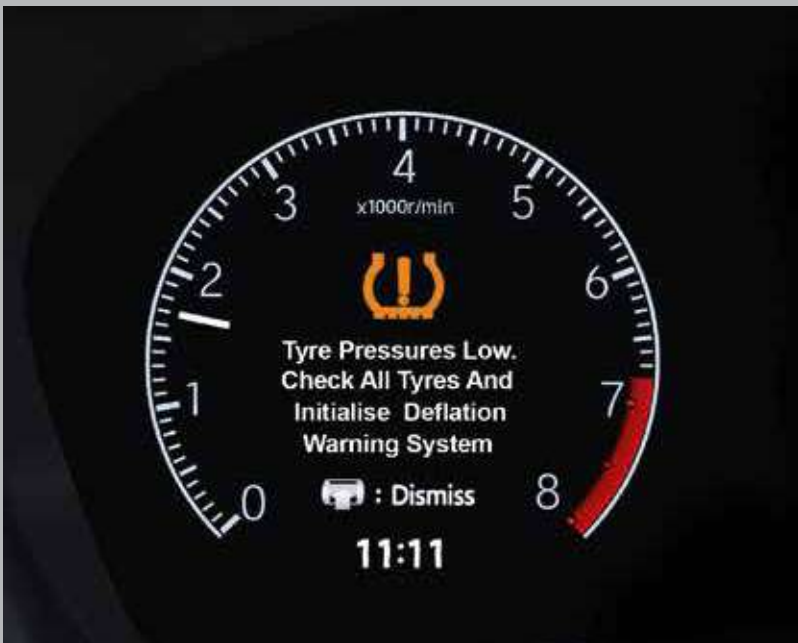
AUTO DIMMING INSIDE REAR VIEW MIRROR WITH FRAMELESS DESIGN



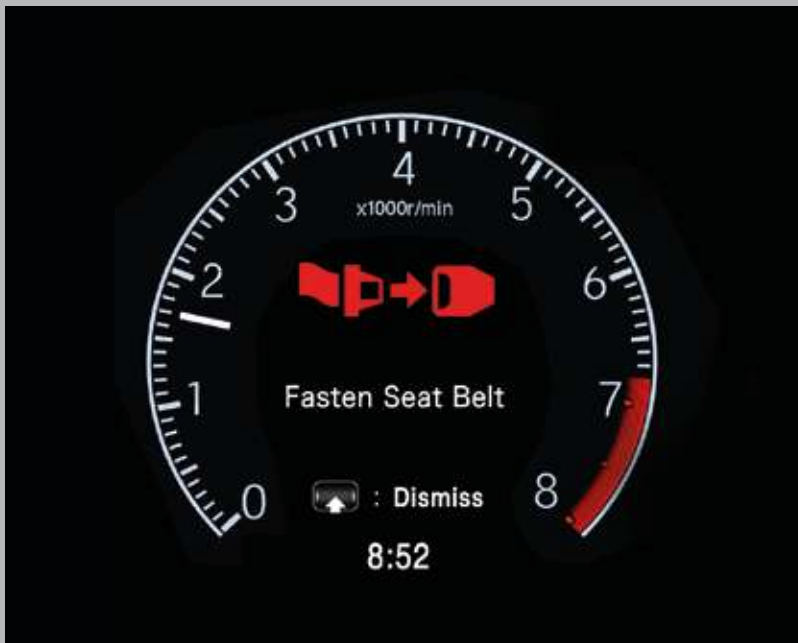
REAR ISOFIX ANCHORAGES & TETHER



IMMOBILIZER WITH ANTI-THEFT ALARM



TYRE PRESSURE MONITORING SYSTEM (DEFLATION WARNING SYSTEM)



SEATBELT WARNING





CONVENIENCES  
THAT RAISE  
THE BAR OF YOUR  
EXPERIENCE





Honda Advanced Smart Key System for added Convenience and Security.

REMOTE ENGINE START (CVT ONLY)



ALL AUTO POWER WINDOW WITH KEYLESS REMOTE OPERATION (INCL. SUNROOF)



PM 2.5 CABIN AIR FILTER



WALK AWAY AUTO LOCK



CLICK-FEEL AC DIALS WITH TEMPERATURE DIAL RED/BLUE ILLUMINATION



FULLY AUTOMATIC CLIMATE CONTROL WITH MAX COOL



Settle In. Adjust to your comfort. Find that sweet spot. Luxury and comfort come together to pamper you in every trip in the New City.



ENGINE START/STOP WITH TOUCH SENSOR BASED SMART KEYLESS ACCESS



LED MAP & REAR READING LAMPS



ONE-TOUCH ELECTRIC SUNROOF



REAR WINDSCREEN SUNSHADE



REAR AC VENTS WITH CHARGING PORTS (2)



TELESCOPIC & TILT STEERING ADJUSTMENT





ILLUMINATED CARGO ROOM (506 LITRES)

# CLEVER DESIGN AND ENGINEERING MAKE GOOD USE OF EVERY SPACE WITHIN THE NEW CITY.

There is storage for personal items within the cabin, as well as spacious boot space for luggage.



SEAT BACK POCKET WITH SMARTPHONE SUB POCKETS



FRONT CENTRE ARMREST WITH STORAGE



SPACIOUS GLOVE BOX



REAR ARMREST WITH CUP HOLDERS



FRONT CONSOLE CUP HOLDERS



FRONT DOOR BOTTLE HOLDER (1L) WITH MAP POCKETS



# LUXURY IS IN THE ENHANCEMENTS



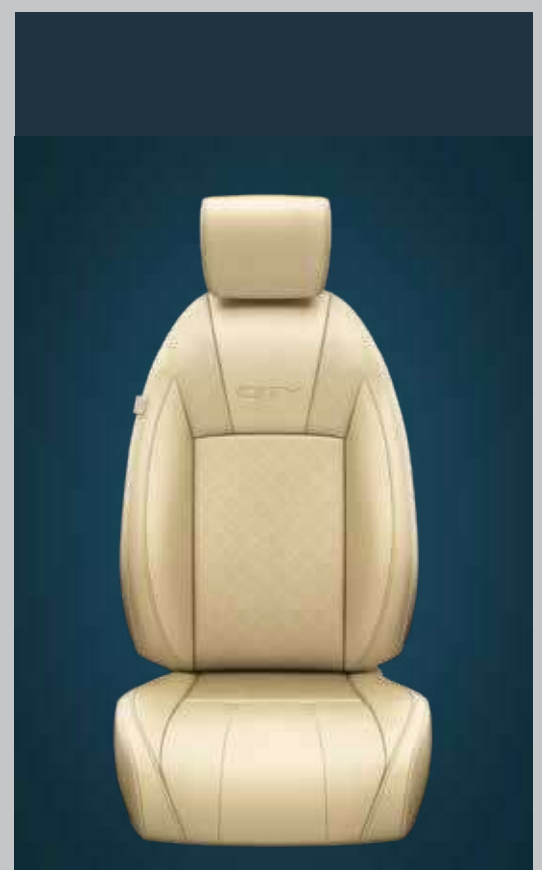
TRUNK GARNISH



LEG ROOM LAMP



WIRELESS CHARGER (PLUG & PLAY TYPE)



SIDE AIR BAG COMPATIBLE SEAT COVER



## CHROME PACKAGE - ADMIRE



## CHROME PACKAGE - ELEGANCE



## UTILITY PACKAGE





# GRADES

## SV

Advanced Compatibility Engineering (ACE™) Body Structure  
4 Airbags System (Dual Front i-SRS, Front Seats i-Side)  
Energy Absorbing Front Pretensioner Seatbelts with Load Limiter  
All 5 Seats 3 point ELR Seatbelts & Head Restraints  
ISOFIX compatible Rear Side Seats with Lower Anchorage & Top Tether  
Multi-Angle Rear Camera with Guidelines (Normal, Wide, Top-Down Modes)  
Rear Parking Sensors  
ABS, Brake Assist (BA), Electronic Brake-force Distribution (EBD)  
Vehicle Stability Assist (VSA) with Electronic Stability & Traction Control  
Agile Handling Assist (AHA)  
Hill Start Assist & Emergency Stop Signal  
Tyre Pressure Monitoring System (Deflation Warning System)  
Day/Night Inside Rear View Mirror  
Advanced Wipers & Washer with Variable Intermittent Speed  
Rear Windshield Demister  
Driver & Front Assistant Seatbelt Indicator & Reminder  
Speed Alarm Indicator & Reminder  
Door Ajar & Trunk Open Indicator & Reminder  
Vehicle Immobilizer with Security System Alarm  
Integrated LED Daytime Running Lights (DRLs) & Position Lamps  
Projector Headlamps with 3-eye L-shaped Plating  
Z-shaped 3D Wrap-around LED Tail Lamps with Uniform Edge Light  
LED Side Marker Lights in Tail Lamp  
Wide & Thin Front Chrome Upper Grille  
Elegant Front Grille Mesh: Horizontal Slats Pattern  
Sharp Side Character Line (Katana Blade In-Motion)  
Steel Wheel R15 with Trim Cover  
Shark Fin Antenna  
Body Coloured Door Mirrors & Handles  
Integrated LED Side Turn Indicator on Door Mirrors  
20.3 cm (8") Advanced Touchscreen Display Audio  
- Wired Smartphone Connectivity (Android Auto, Apple CarPlay, Weblink)  
- Remote Control by Smartphone Application via Bluetooth®  
Premium Surround Sound System (4 Speakers)  
Steering Mounted Audio, HFT & VR Switch with Illumination  
Premium Beige & Black Two-Tone Interiors with Embossed Fabric Upholstery  
Leather Shift Lever Boot with Stitch  
Satin Metallic Finish on AC Vents Surround & Steering Wheel  
One-Push Start/Stop Button  
Driver Power Window Auto-Open/Close Function with Pinch Guard  
Follow-Me-Home / Lead-Me-To-Car Headlights (Auto Off Timer)  
Power Adjustable & Folding Door Mirrors  
Fully Automatic Climate Control with MAX COOL mode  
Click-Feel AC Dials with Temperature Dial Red/Blue Illumination  
Rear Air Conditioning Vents  
PM2.5 Dust & Pollen Cabin Filter  
Automatic Door Locking & Unlock  
Telescopic & Tilt Steering Adjustment for Reach & Height  
Driver Seat Height Adjuster  
Front Center Armrest & Storage Box  
Front Console Lower Pocket for Smartphones  
Rear Center Foldable Armrest with Cupholder  
1L Bottle Holders in All Doors  
Driver Side Coin Pocket with Lid  
Driver & Assistant Sunvisor Vanity Mirrors  
Foldable Grab Handles (Soft Closing Motion)  
Front Map Lamps  
Ambient Light (Center Console Pocket)  
Advanced Twin-Ring Combimeter  
Eco Assist System with Ambient Meter Light

## VX (OVER V)

6 Airbags System (Dual Front i-SRS, Front Seats i-Side & Side Curtain)  
LaneWatch™ Camera  
One-Touch Electric Sunroof with Slide/Tilt Function and Pinch Guard  
Display Audio Piano Black Surround Garnish  
Wireless Charger (Plug & Play Type)  
Rear Reading Lamps

## V (OVER SV)

Honda Sensing  
- Collision Mitigation Braking System (CMBS)  
- Adaptive Cruise Control  
- Lane Keeping Assist System (LKAS)  
- Lead Car Departure Notification System  
- Road Departure Mitigation System  
- Auto High-Beam  
Automatic Headlight Control with Light Sensor  
Front Fog Lamps  
R15 Dual-Tone Diamond-Cut Multi-Spoke Alloy Wheels  
Front & Rear Mud Guards  
Next Gen Honda Connect with Telematics Control Unit (TCU)  
- Works with Alexa  
- Works with Google Assistant  
- Smartwatch Connectivity  
Wireless Smartphone Connectivity (Android Auto, Apple CarPlay)  
Inside Door Handle Chrome Finish  
Chrome Finish on All AC Vent Knobs & Hand Brake Knob  
Touch-Sensor Based Smart Keyless Access  
- Remote Engine Start (CVT Only)  
- Walk Away Auto Lock (Customizable)  
Adaptive Cruise Control & LKAS Operation Switches on Steering Wheel  
7-Speed Paddle Shifters with LED Shift Lever Position Indicator (CVT Only)  
Easy Shift Lock Release Slot (CVT Only)  
10.6 cm (4.2 inch) Color TFT Meter Display  
Multi Function Driver Information Interface  
- Range & Fuel Economy Information  
- Average Speed & Time Information  
- Display Contents & Vehicle Settings Customization  
- Safety Support Settings  
- Vehicle Information & Warning Message Display  
- Rear Parking Sensor Proximity Display  
- Rear Seat Reminder  
Steering Scroll Selector Wheel and Meter Control Switch  
ECON™ Button & Mode Indicator (CVT Only)  
7-speed Manual Shift Mode & Position Indicator (CVT Only)

## ZX (OVER VX)

Auto Dimming Inside Rear View Mirror with Frameless Design  
Advanced Auto-Wiper system with Rain Sensor  
Full LED Headlamps with 9 LED Array (Inline-Shell)  
L-Shaped LED Guide-type Turn Signal in Headlamps  
LED Front Fog Lamps  
Sporty Front Grille Mesh: Diamond Chequered Flag Pattern  
Sporty Fog Lamp Garnish & Carbon-Wrapped Front Bumper Lower Molding  
Sporty Carbon-Wrapped Rear Bumper Diffuser  
Sporty Trunk Lip Spoiler (Body Coloured)  
R16 Dual-Tone Diamond-Cut Multi-Spoke Alloy Wheels  
Outer Door Handles Chrome Finish  
Premium Surround Sound System (4 Speakers + 4 Tweeters)  
17.7 cm (7 inch) High Definition Full Color TFT Meter  
- Digital Speedometer  
- G-Meter Display  
Instrument Panel Assistant side Garnish Glossy Darkwood Finish  
Exclusive Leather Upholstery with Contemporary Seat Design  
Leather Shift Lever Knob  
Smooth Leather Steering Wheel with Stitch  
Soft Pads with Ivory Real Stitch in Interiors  
Chrome Decoration Ring for Map Lamp & Rear Reading Lamp  
All 4 Power Windows & Sunroof Keyless Remote Open/Close  
All 4 Power Windows Auto-Open/Close Function with Pinch Guard  
Automatic Folding Door Mirrors (Welcome Function)  
Rear Sunshade  
Driver & Assistant Seat Back Pockets with Smartphone Sub-Pockets  
Ambient Light (Map Lamp & Front Footwell)  
Ambient Light (Front Door Inner Handles & Front Door Pockets)  
LED Front Map Lamps & LED Rear Reading Lamps

### Disclaimer:

Colors, features and specifications are grade specific and subject to change without prior notice

SV refers to CITY MMC RDE SV MT (i-VTEC)

V refers to CITY MMC RDE V MT/CVT (i-VTEC)

VX refers to CITY MMC RDE VX MT/CVT (i-VTEC)

ZX refers to CITY MMC RDE ZX MT/CVT (i-VTEC)

Leather refers to mix of Genuine & Synthetic Leather

Wireless Charger (Plug & Play Type) is accessory supplied as add-on to the standard equipment & fitted by dealer.

Honda Connect comes with free subscription for 1st 5 years from date of purchase

Smartphone connectivity is depending on compatibility & configuration of Smartphone

Terms & Conditions apply.

# SPECS & COLOURS

## ENGINE

Type	Water Cooled Inline 4 Cylinder i-VTEC DOHC with VTC
Displacement (cm <sup>3</sup> )	1 498
No. of Valves	16
Power (kW [ps] @ rpm)	89 [121] @ 6 600
Torque (Nm @ rpm)	145 @ 4 300
Fuel Efficiency** (km/l)	17.8 (MT), 18.4 (CVT)

## TRANSMISSION

Manual	6 Forward & 1 Reverse
Automatic	CVT (Continuously Variable Transmission)

## DIMENSIONS & WEIGHT

Overall Length (mm)	4 574 (SV,V,VX) , 4 583 (ZX)
Overall Width (mm)	1 748
Overall Height(mm)	1 489
Wheelbase (mm)	2 600
Front Track (mm)	1 496
Rear Track (mm)	1 484
Kerb Weight (kg)	1 107 - 1 153
Max. GVW (kg)	1 482 - 1 528
Fuel Tank Capacity (Litres)	40
Seating Capacity (Persons)	5
Boot Space (Litres)	506
Steering System	Collapsible Electric Power Assisted
Turning Circle Radius (m)	5.3

## SUSPENSION SYSTEM

Front	McPherson Strut with Coil Spring
Rear	Torsion beam with Coil Spring
Anti-Roll Bar	Torsion Bar Type
Shock Absorbers	Telescopic Hydraulic Nitrogen Gas-filled

## BRAKE SYSTEM

Front	Disc (Ventilated)
Rear	Drum
Parking	Mechanically activating on Rear Wheels

## TYRES & WHEELS

Wheel Type	15x6 J Steel & Alloy, 16x6 J Alloy
Tyre Type & Size	Tubeless Radial 185/60 R15 84H, 185/55 R16 83H
Spare Wheel Type	Steel Wheel

\*\*As certified under Rule 115 of CMVR 1989

Colors, features and specifications are grade specific and subject to change without prior notice

The spare wheel does not come with Alloy Wheel and the rim / tyre size may differ from the standard size depending on the variant

Terms & Conditions apply.



# KEY FEATURES

	SV	V	VX	ZX
<b>SAFETY AND SECURITY</b>				
Honda Sensing	-	0	0	0
-Collision Mitigation Braking System (CMBS)	-	0	0	0
-Adaptive Cruise Control	-	0	0	0
-Lane Keeping Assist System (LKAS)	-	0	0	0
-Lead Car Departure Notification System	-	0	0	0
-Road Departure Mitigation System	-	0	0	0
-Auto High-Beam	-	0	0	0
Advanced Compatibility Engineering (ACE™) Body Structure	0	0	0	0
4 Airbags System (Dual Front i-SRS, Front Seats i-Side)	0	0	-	-
6 Airbags System (Dual Front i-SRS, Front Seats i-Side & Side Curtain)	-	-	0	0
Energy Absorbing Front Pretensioner Seatbelts with Load Limiter	0	0	0	0
All 5 Seats 3 point Emergency Locking retractor (ELR) Seatbelts	0	0	0	0
All 5 Seats Head Restraints	0	0	0	0
ISOFIX compatible Rear Side Seats with Lower Anchorage & Top Tether	0	0	0	0
LaneWatch™ Camera	-	-	0	0
Multi-Angle Rear Camera with Guidelines (Normal, Wide, Top-Down Modes)	0	0	0	0
Rear Parking Sensors	0	0	0	0
Anti-Lock Brake System (ABS)	0	0	0	0
Brake Assist (BA) with Electronic Brake-force Distribution (EBD)	0	0	0	0
Vehicle Stability Assist (VSA) with Electronic Stability & Traction Control	0	0	0	0
Agile Handling Assist (AHA)	0	0	0	0
Hill Start Assist	0	0	0	0
Emergency Stop Signal	0	0	0	0
Tyre Pressure Monitoring System (Deflation Warning System)	0	0	0	0
Automatic Headlight Control with Light Sensor	-	0	0	0
Day/Night Inside Rear View Mirror	0	0	0	0
Auto Dimming Inside Rear View Mirror with Frameless Design	-	-	-	0
Advanced Wipers & Washer with Variable Intermittent Speed	0	0	0	-
Advanced Auto-Wiper system with Rain Sensor	-	-	-	0
Rear Windshield Demister	0	0	0	0
Driver & Front Assistant Seatbelt Indicator & Reminder	0	0	0	0
Speed Alarm Indicator & Reminder	0	0	0	0
Door Ajar & Trunk Open Indicator & Reminder	0	0	0	0
Vehicle Immobilizer with Security System Alarm	0	0	0	0
Dual Horn	0	0	0	0
Battery Sensor	0	0	0	0
<b>EXTERIOR DESIGN</b>				
Integrated LED Daytime Running Lights (DRLs) & Position Lamps	0	0	0	0
Full LED Headlamps with 9 LED Array (Inline-Shell)	-	-	-	0
L-Shaped LED Guide-type Turn Signal in Headlamps	-	-	-	0
Projector Headlamps with 3-eye L-shaped Plating	0	0	0	-
Front Fog Lamps	-	Bulb	Bulb	LED
Z-shaped 3D Wrap-around LED Tail Lamps with Uniform Edge Light	0	0	0	0
LED Side Marker Lights in Tail Lamp	0	0	0	0
Wide & Thin Front Chrome Upper Grille	0	0	0	0
Elegant Front Grille Mesh: Horizontal Slats Pattern	0	0	0	-
Sporty Front Grille Mesh: Diamond Chequered Flag Pattern	-	-	-	0
Sporty Fog Lamp Garnish & Carbon-Wrapped Front Bumper Lower Molding	-	-	-	0
Sporty Carbon-Wrapped Rear Bumper Diffuser	-	-	-	0
Sporty Trunk Lip Spoiler (Body Coloured)	-	-	-	0
Sharp Side Character Line (Katana Blade In-Motion)	0	0	0	0
One-Touch Electric Sunroof with Slide/Tilt Function and Pinch Guard	-	-	0	0
Steel Wheel R15 with Trim Cover	0	-	-	-
Dual-Tone Diamond-Cut Multi-Spoke Alloy Wheels	-	R15	R15	R16
Outer Door Handles Chrome Finish	-	-	-	0
Shark Fin Antenna	0	0	0	0
Body Coloured Door Mirrors	0	0	0	0
Integrated LED Side Turn Indicator on Door Mirrors	0	0	0	0
Front & Rear Mud Guards	-	0	0	0
Black Sash Tape on B-Pillar	0	0	0	0
<b>CONNECTIVITY &amp; INFOTAINMENT</b>				
Next Gen Honda Connect with Telematics Control Unit (TCU)	-	0	0	0
-Works with Alexa	-	0	0	0
-Works with Google Assistant	-	0	0	0
-Smartwatch Connectivity	-	0	0	0
20.3 cm (8") Advanced Touchscreen Display Audio	0	0	0	0
-IPS Display with Optical Bonding Display Coating for Reflection Reduction	0	0	0	0
-Wired Smartphone Connectivity (Android Auto, Apple CarPlay, Weblink)	0	0	0	0
-Wireless Smartphone Connectivity (Android Auto, Apple CarPlay)	-	0	0	0
-Voice Command Support for Smartphone Connectivity	0	0	0	0
-AM/FM Digital Radio Tuner, MP3/WAV, i-Pod®/i-Phone®	0	0	0	0
-Bluetooth® for Hands Free Telephony & Audio Streaming support	0	0	0	0
-Remote Control by Smartphone Application via Bluetooth®	0	0	0	0
USB-In Ports (x2)	0	0	0	0
Premium Surround Sound System (Speakers + Tweeters)	4	4	4	8 (4+4)
Steering Mounted Audio & Hands-Free Telephone Illuminated Switches	0	0	0	0
Steering Mounted Voice Recognition Switch with Illumination	0	0	0	0
<b>INTERIOR DESIGN AND COLOR, MATERIALS, FINISH</b>				
Premium Beige & Black Two-Tone Color Coordinated Interiors	0	0	0	0
Instrument Panel Assistant side Garnish Finish	Piano Black	Piano	Piano Black	Glossy Darkwood
Display Audio Piano Black Surround Garnish	-	-	0	0
Premium Embossed Fabric Upholstery	0	0	0	-
Exclusive Leather Upholstery with Contemporary Seat Design	-	-	-	0
Leather Shift Lever Boot with Stitch	0	0	0	0
Leather Shift Lever Knob	-	-	-	0
Smooth Leather Steering Wheel with Stitch				
Soft Pads with Ivory Real Stitch (Instrument Panel Assistant side Mid Pad, Center Console Knee Pad, Front Center Armrest, Door Lining Armrest & Center Pads)	-	-	-	0
Satin Metallic Surround Finish on All AC Vents	0	0	0	0
Satin Metallic Garnish on Steering Wheel	0	0	0	0
Inside Door Handle Chrome Finish	-	0	0	0
Chrome Finish on All AC Vent Knobs & Hand Brake Knob	-	0	0	0
Chrome Decoration Ring for Map Lamp & Rear Reading Lamp	-	-	-	0
Trunk Lid Inside Lining Cover	0	0	0	0

	SV	V	VX	ZX
<b>COMFORT &amp; CONVENIENCE</b>				
Honda Smart Key System with Keyless Remote (x2)	0	0	0	0
-One-Push Start/Stop Button	0	0	0	0
-Touch-Sensor Based Smart Keyless Access	-	0	0	0
-Electrical Trunk Lock with Keyless Release	0	0	0	0
-Remote Engine Start (CVT Only)	-	0	0	0
-Walk Away Auto Lock (Customizable)	-	0	0	0
-Power Windows & Sunroof Keyless Remote Open/Close	-	-	-	0
Power Windows Auto-Open/Close Function with Pinch Guard	Driver Only	Driver Only	Driver Only	All 4 Doors
Follow-Me-Home / Lead-Me-To-Car Headlights (Auto Off Timer)	0	0	0	0
Automatic Folding Door Mirrors (Welcome Function)	-	-	-	0
Power Adjustable & Folding Door Mirrors	0	0	0	0
Fully Automatic Climate Control with MAX COOL mode	0	0	0	0
Click-Feel AC Dials with Temperature Dial Red/Blue Illumination	0	0	0	0
Rear Air Conditioning Vents	0	0	0	0
Rear Sunshade	-	-	-	0
PM2.5 Dust & Pollen Cabin Filter	0	0	0	0
Power Central Door Lock w. Driver Master Switch	0	0	0	0
Automatic Door Locking & Unlock	0	0	0	0
Telescopic & Tilt Steering Adjustment for Reach & Height	0	0	0	0
Driver Seat Height Adjuster	0	0	0	0
Adaptive Cruise Control & LKAS Operation Switches on Steering Wheel	-	0	0	0
7-Speed Paddle Shifters (CVT Only)	-	0	0	0
LED Shift Lever Position Indicator (CVT Only)	-	0	0	0
Easy Shift Lock Release Slot (CVT Only)	-	0	0	0
One Touch Turn Signal for Lane Change Signaling	0	0	0	0
Accessory Charging Ports with Lid (Front Console x1 + Rear x2)	0	0	0	0
Front Center Armrest & Storage Box	0	0	0	0
Front Console Lower Pocket for Smartphones	0	0	0	0
Floor Console Cupholders & Utility Space for Smartphones	0	0	0	0
Wireless Charger (Plug & Play Type)	-	-	0	0
Rear Center Foldable Armrest with Cupholder	0	0	0	0
1L Bottle Holders in All Doors	0	0	0	0
Driver & Assistant Seat Back Pockets with Smartphone Sub-Pockets	-	-	-	0
Driver Side Coin Pocket with Lid	0	0	0	0
Driver & Assistant Sunvisor Vanity Mirrors	0	0	0	0
Foldable Grab Handles (Soft Closing Motion)	0	0	0	0
Ambient Light (Center Console Pocket)	0	0	0	0
Ambient Light (Map Lamp & Front Footwell)	-	-	-	0
Ambient Light (Front Door Inner Handles & Front Door Pockets)	-	-	-	0
Front Map Lamps	Bulb	Bulb	Bulb	LED
Rear Reading Lamps	-	-	Bulb	LED
Interior Center Roof Light	Bulb	Bulb	-	-
Trunk Light for Cargo Area Illumination	0	0	0	0
<b>INSTRUMENTATION</b>				
Advanced Twin-Ring Combimeter	0	0	0	0
Eco Assist System with Ambient Meter Light	0	0	0	0
10.6 cm (4.2 inch) Color TFT Meter Display	-	0	0	-
17.7 cm (7 inch) High Definition Full Color TFT Meter	-	-	-	0
Multi Function Driver Information Interface	-	0	0	0
-Digital Speedometer	-	-	-	0
-Range & Fuel Economy Information	-	0	0	0
-Average Speed & Time Information	-	0	0	0
-G-Meter Display	-	-	-	0
-Display Contents & Vehicle Settings Customization	-	0	0	0
-Safety Support Settings	-	0	0	0
-Vehicle Information & Warning Message Display	-	0	0	0
-Rear Parking Sensor Proximity Display	-	0	0	0
-Rear Seat Reminder	-	0	0	0
-Steering Scroll Selector Wheel and Meter Control Switch	-	0	0	0
Meter Illumination Control Switch	0	0	0	0
ECON™ Button & Mode Indicator (CVT Only)	-	0	0	0
7-speed Manual Shift Mode & Position Indicator (CVT Only)	-	0	0	0
Fuel Gauge Display with Fuel Reminder Warning	0	0	0	0
Trip Meter (x2)	0	0	0	0
Average Fuel Economy Indicator	0	0	0	0
Instant Fuel Economy Indicator	0	0	0	0
Cruising Range (Distance-to-Empty) Indicator	0	0	0	0
Outside Temperature Indicator	0	0	0	0
Other Warning Lamps & Indicators	0	0	0	0

**Disclaimer:**

Colors, features and specifications are grade specific and subject to change without prior notice

SV refers to CITY MMC RDE SV MT (i-VTEC)

V refers to CITY MMC RDE V MT/CVT (i-VTEC)

VX refers to CITY MMC RDE VX MT/CVT (i-VTEC)

ZX refers to CITY MMC RDE ZX MT/CVT (i-VTEC)

Leather refers to mix of Genuine & Synthetic Leather

Wireless Charger (Plug & Play Type) is accessory supplied as add-on to the standard equipment & fitted by dealer.

Honda Connect comes with free subscription for 1st 5 years from date of purchase

Smartphone connectivity is depending on compatibility & configuration of Smartphone

Terms & Conditions apply

\*with free subscription for 1<sup>st</sup> 5 years and Alexa remote capability

\*\*depending on compatibility & configuration of Smartphone

Disclaimer: Leather refers to mix of Genuine & Synthetic Leather materials



<http://facebook.com/hondacarindia>



<http://twitter.com/hondacarindia>





# SPECS & COLOURS

OBSIDIAN BLUE PEARL



RADIANT RED METALLIC



PLATINUM WHITE PEARL



GOLDEN BROWN METALLIC



METEOROID GREY METALLIC



LUNAR SILVER METALLIC



Scan now to Book or Buy  
Honda From Home



For more information, please visit our authorized dealership or [www.hondacarsindia.com](http://www.hondacarsindia.com). For corporate sales enquiry please write to [corporatesales@hondacarindia.com](mailto:corporatesales@hondacarindia.com). Actual colours may vary due to printing constraints. Please check and experience the availability of variants, colours and features at the dealerships. Appearance of black shade on glass of vehicle is due to lighting effect. Specifications and features are subject to change without prior notice. Extended warranty and roadside assistance are not part of standard purchase. \*Mileage figures are certified by ARAI under rule 115 of CMVR 1989. The mileage figures are as per the standard test conditions and may vary subject to traffic/road/climate conditions and adherence to maintenance schedule. Colour may vary from actual. Creative visualization applied. Images and depictions are for illustrative and representational purposes only. May be used at relevant places in the promotion. †Segment is defined by midsize sedans with length usually up to 4500 mm and engine size up to 1.5 Litres. ‡Warranty of unlimited kms in 3 year period from date of sale of new vehicle is part of standard Honda City purchase. †Amazon, Alexa and all related logos are trademarks of amazon.com, Inc. or its affiliates. Alexa device is not part of car accessory/giveaway and needs to be purchased separately. Actual device may differ from the one shown here. Please refer to amazon.com for more details. ‡Google, Google Play and the Google Play logo are the trademarks of Google LLC. †Honda Connect Application works on smartphones: Android 7.0 and above, iOS 11.0 and above. Connected services are subject to network availability, facility/transmission limitations as per government regulation and permissions in specific regions/locations. ‡Android Auto and CarPlay are registered trademarks of Google LLC and Apple Inc., respectively. Actual application may differ from representative images. Selective alerts work as per user settings. †Smartwatch is not part of car accessory/giveaway and needs to be purchased separately. †Honda Connect application works on select smartwatch devices and is subject to network availability and government regulations. †Honda Sensing cannot substitute human acumen and vigilance while driving. Honda Cars India Limited urges drivers to follow traffic rules which are meant to keep them safe on roads. T&C apply.

\*As certified under Rule 115 of CMVR 1989

Colors, features and specifications are grade specific and subject to change without prior notice

The spare wheel does not come with Alloy Wheel and the rim / tyre size may differ from the standard size depending on the variant

Terms & Conditions apply.

